



Van Buren Area and Interstate 49 Updates

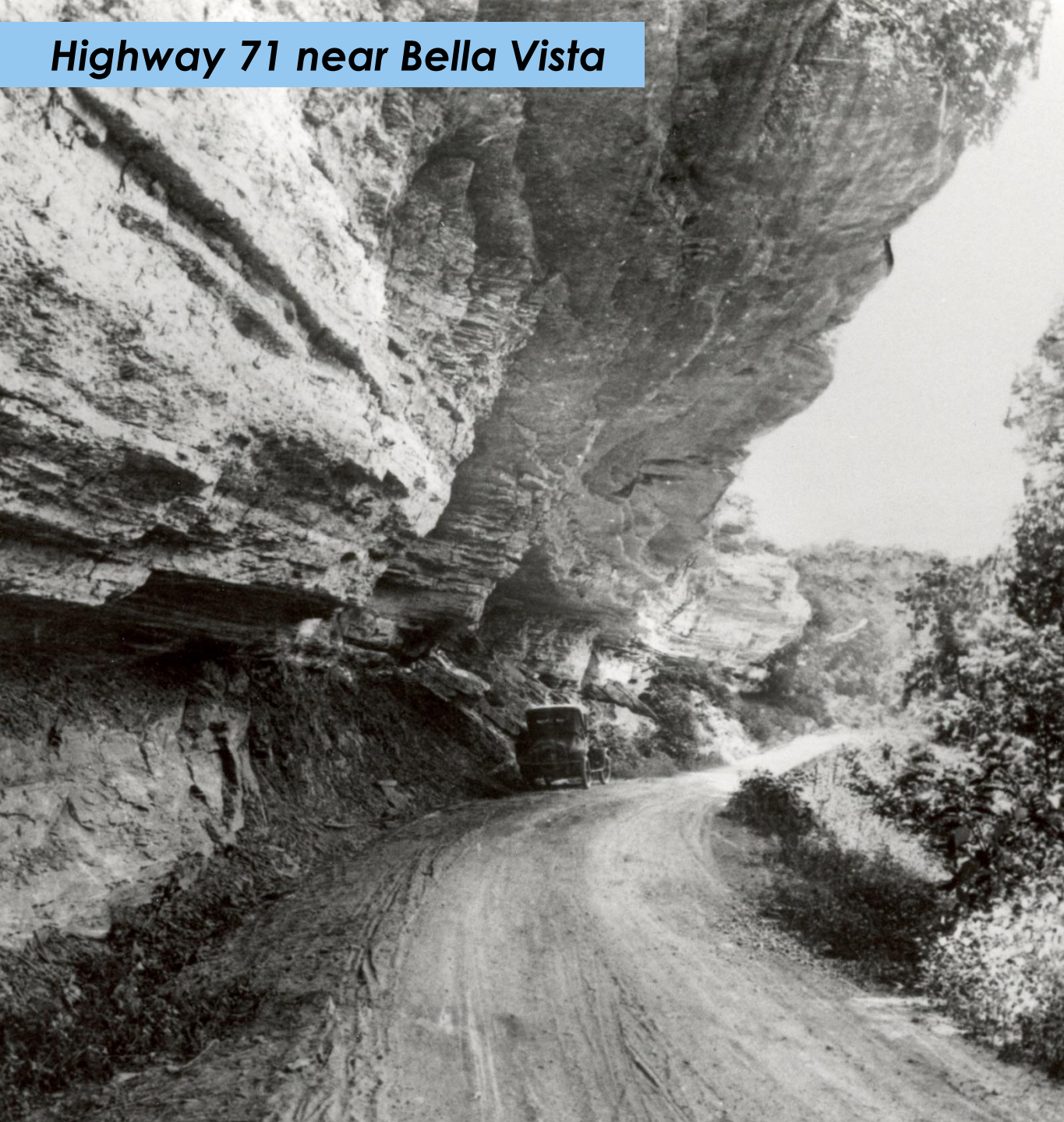
Jared Wiley, P.E.
Chief Engineer – Preconstruction

November 8, 2023





Highway 71 near Bella Vista



- **First Commission created**
 - **No Highway Department**
 - **No Highway System**
- **3,600 Vehicles**
- **36,000 miles of public roads**
- **\$72,000 total budget**

The advice, counsel and expert know-how which is available from the Department's own technical and administrative staffs bear scant weight indeed when they are in conflict with the political pressures and political promises of the moment.

— *Highway Audit Commission Report, 1951*



Widening Hwy. 67 near Malvern, 1956



Major Milestones

1975

1st State to Complete its Interstate System

1985

Rural Road Program – Out of the Mud

1991

Highway Improvement Program

1999

Interstate Rehabilitation Program

2011

2nd Interstate Rehabilitation Program

2012

Connecting Arkansas Program

2020

Renew Arkansas Highways Program



CELEBRATING

100

YEARS OF PROGRESS

1923-2023



ARDOT Quick Facts

- **3rd Largest State Agency**
- **Approximately 3,700 Employees**
- **16,450 Highway Miles**
- **More Than 7,000 Bridges**
- **Central Offices in Little Rock**
- **10 Districts Statewide**

ARDOT ANNUAL FUNDING

01

½-cent Sales Tax
Funds

\$285 Million

02

Regular State
Funds

\$650 Million

03

Federal Funds

\$800 Million



Ten Year Plan

System Preservation

- 7,000 Miles
- 1,100 Bridges

Capital and Capacity

\$1.2 Billion Annually



FEDERAL FISCAL YEARS
2023-2026

STATEWIDE
TRANSPORTATION
IMPROVEMENT
PROGRAM

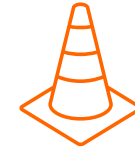
STIP

Presented by:
Arkansas State Highway Commission
In compliance with Title 23 U.S.C. § 135

February 6, 2023



2023-2026 STIP



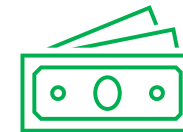
814 Projects



4,100 Miles



271 Bridges



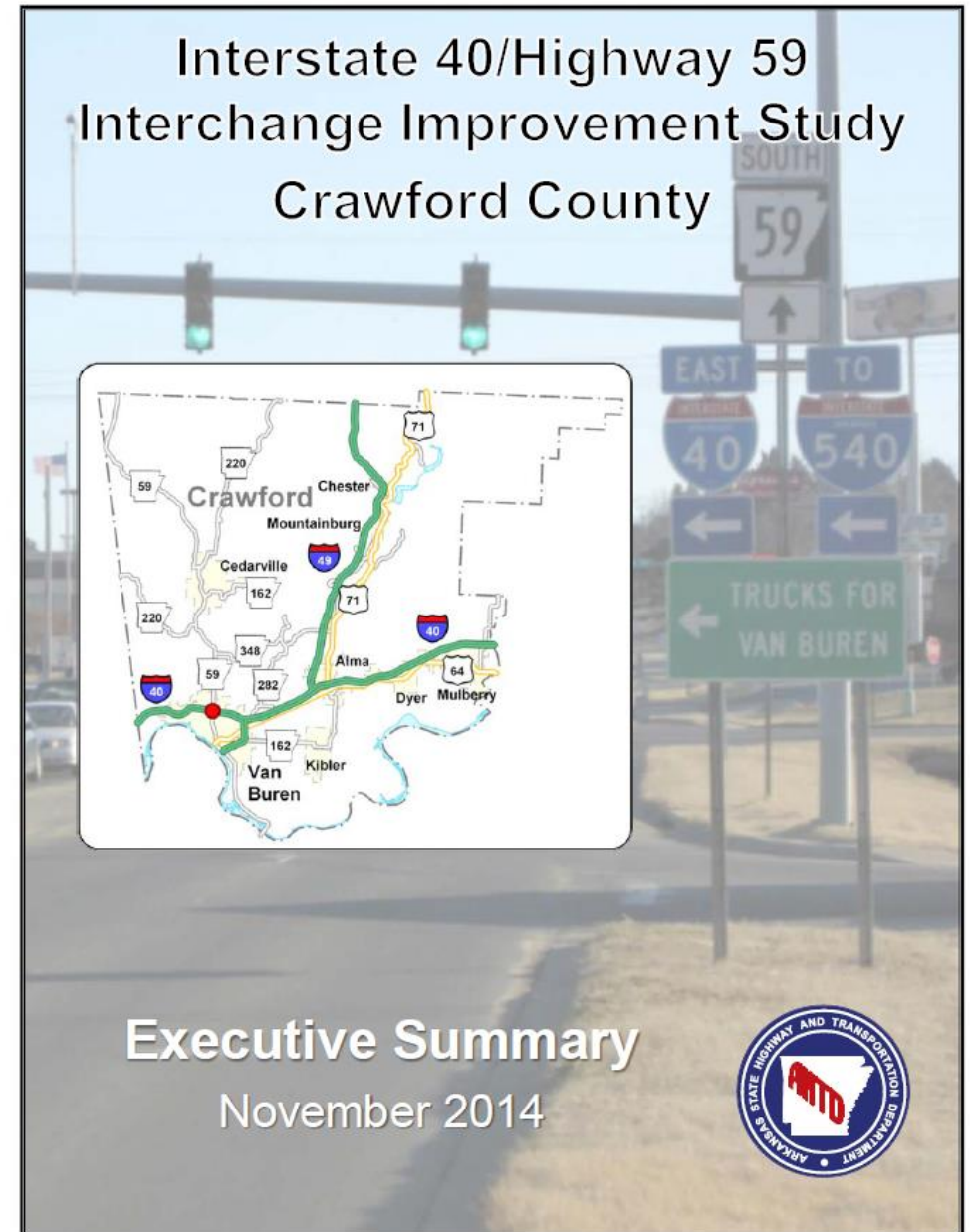
\$4.4 Billion



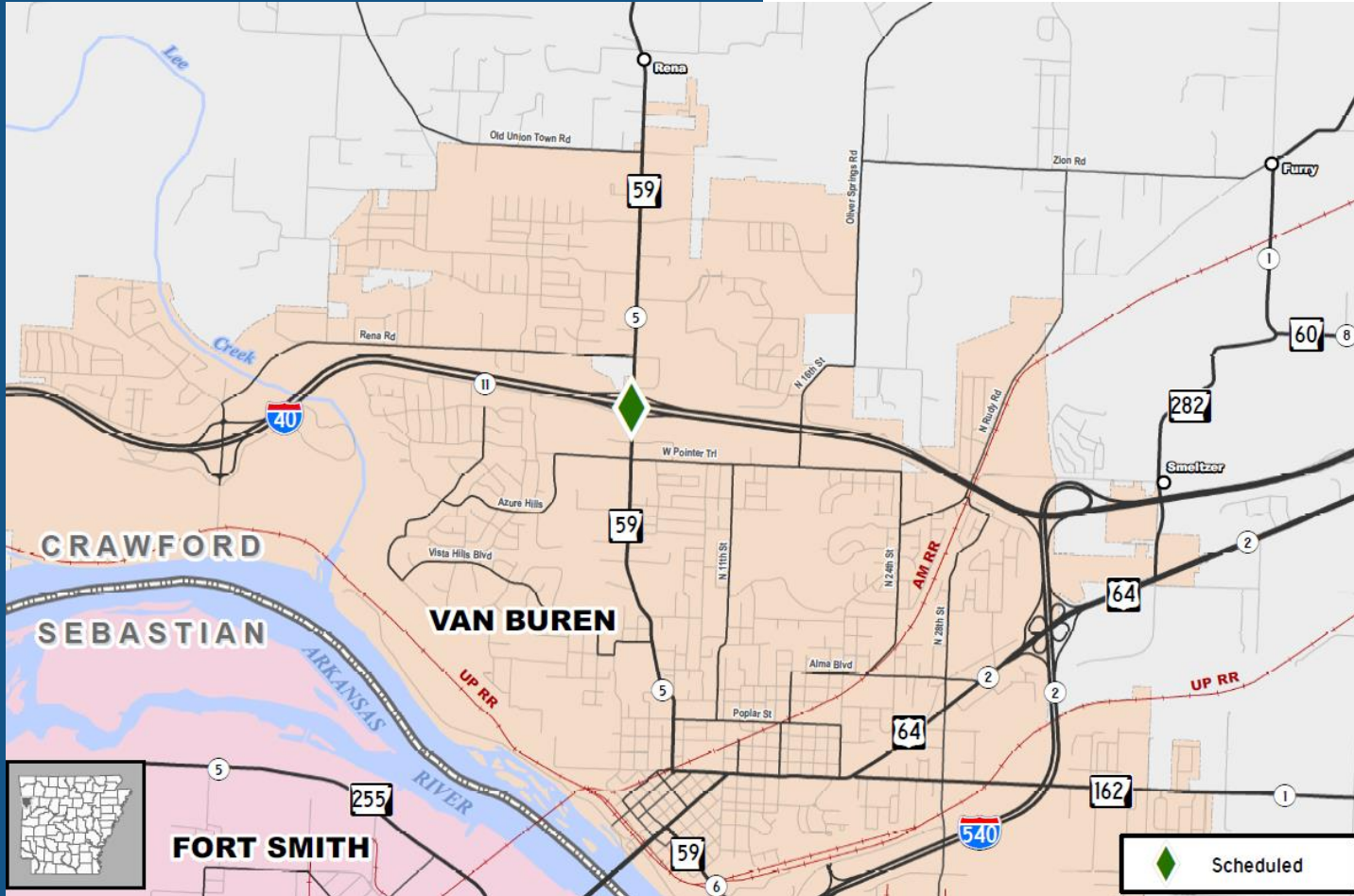
Local Project Updates

INTERSTATE 40/ HIGHWAY 59 STUDY CRAWFORD COUNTY

- Study Authorized by Minute Order 2008-096
- Needs & Feasibility Study Completed in November 2014
- Identified Potential Alternatives to Alleviate Traffic Congestion

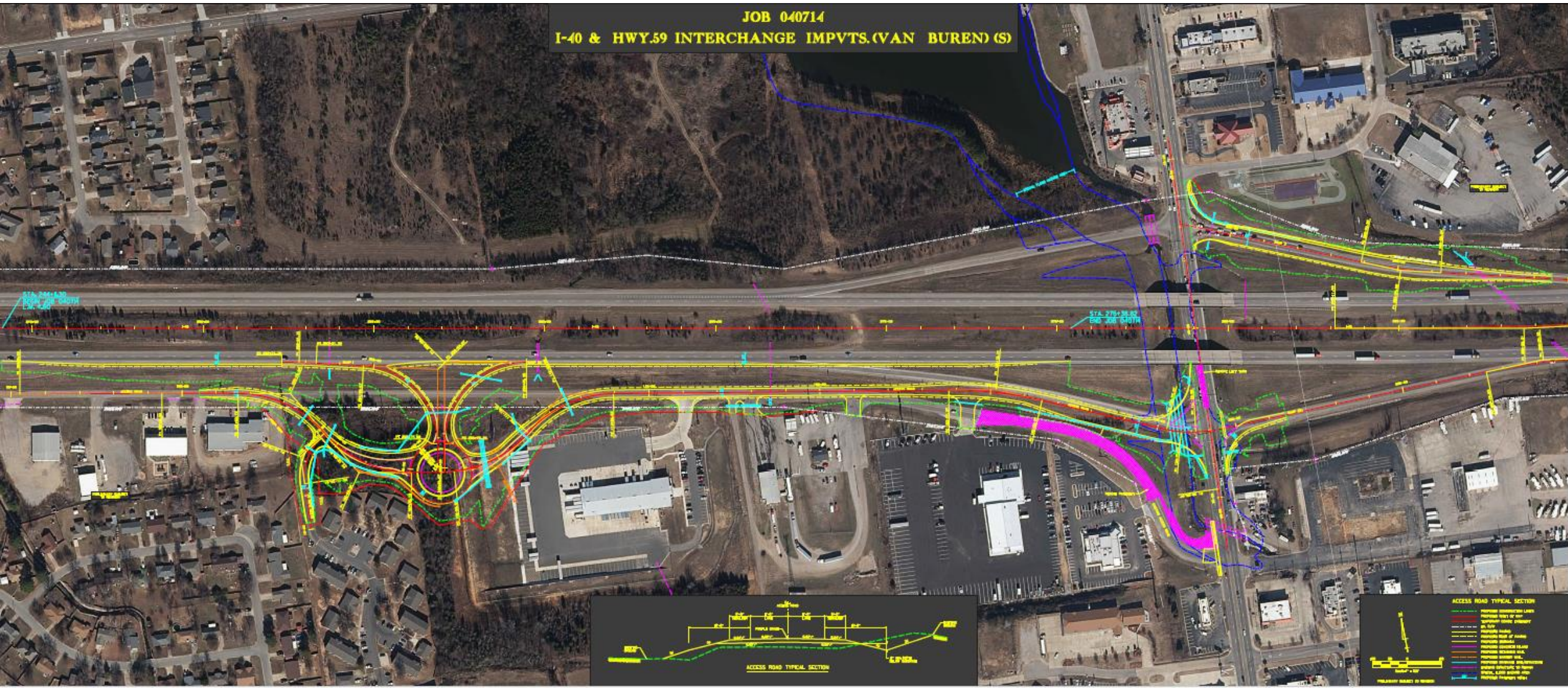


INTERSTATE 40/HIGHWAY 59 CRAWFORD COUNTY



- Interchange Improvements
- 0.5 Mile
- Est. \$10-20 Million
- Scheduled for Mid 2024

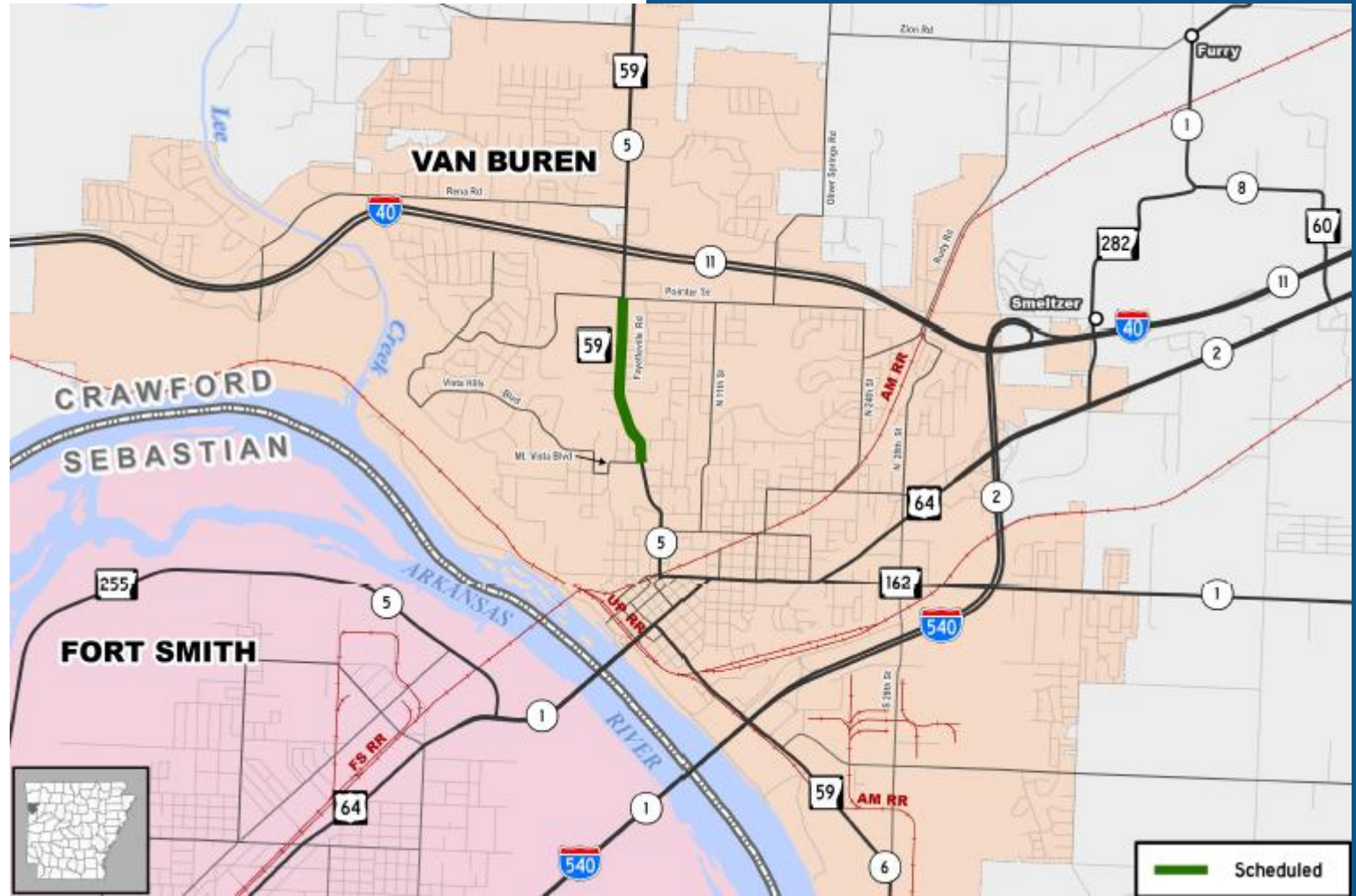
JOB 040714
I-40 & HWY.59 INTERCHANGE IMPVTS.(VAN BUREN) (S)

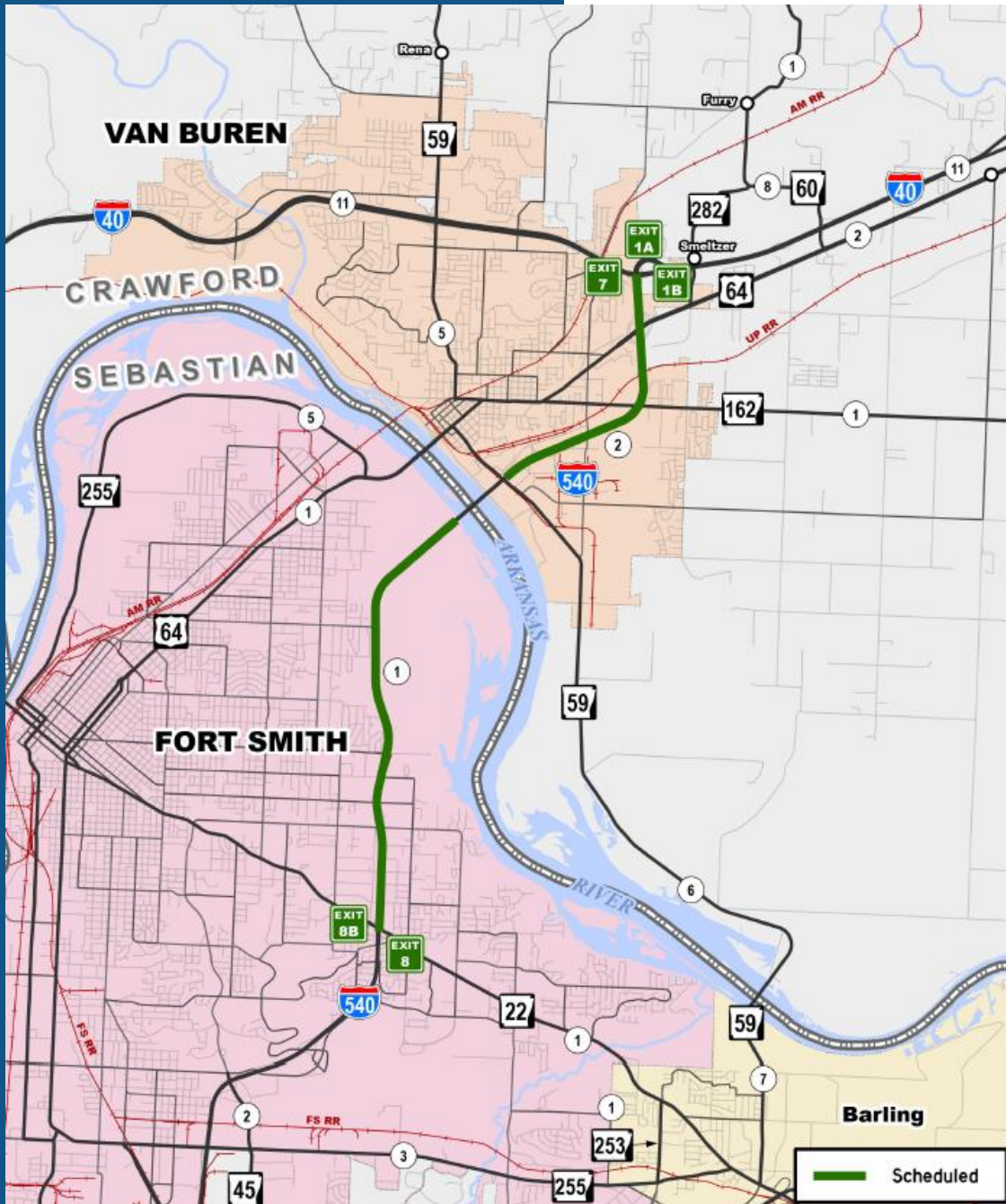


HIGHWAY 59

CRAWFORD COUNTY

- Major Widening
- 1 Mile
- Est. \$5-10 Million
- Scheduled for Mid 2026





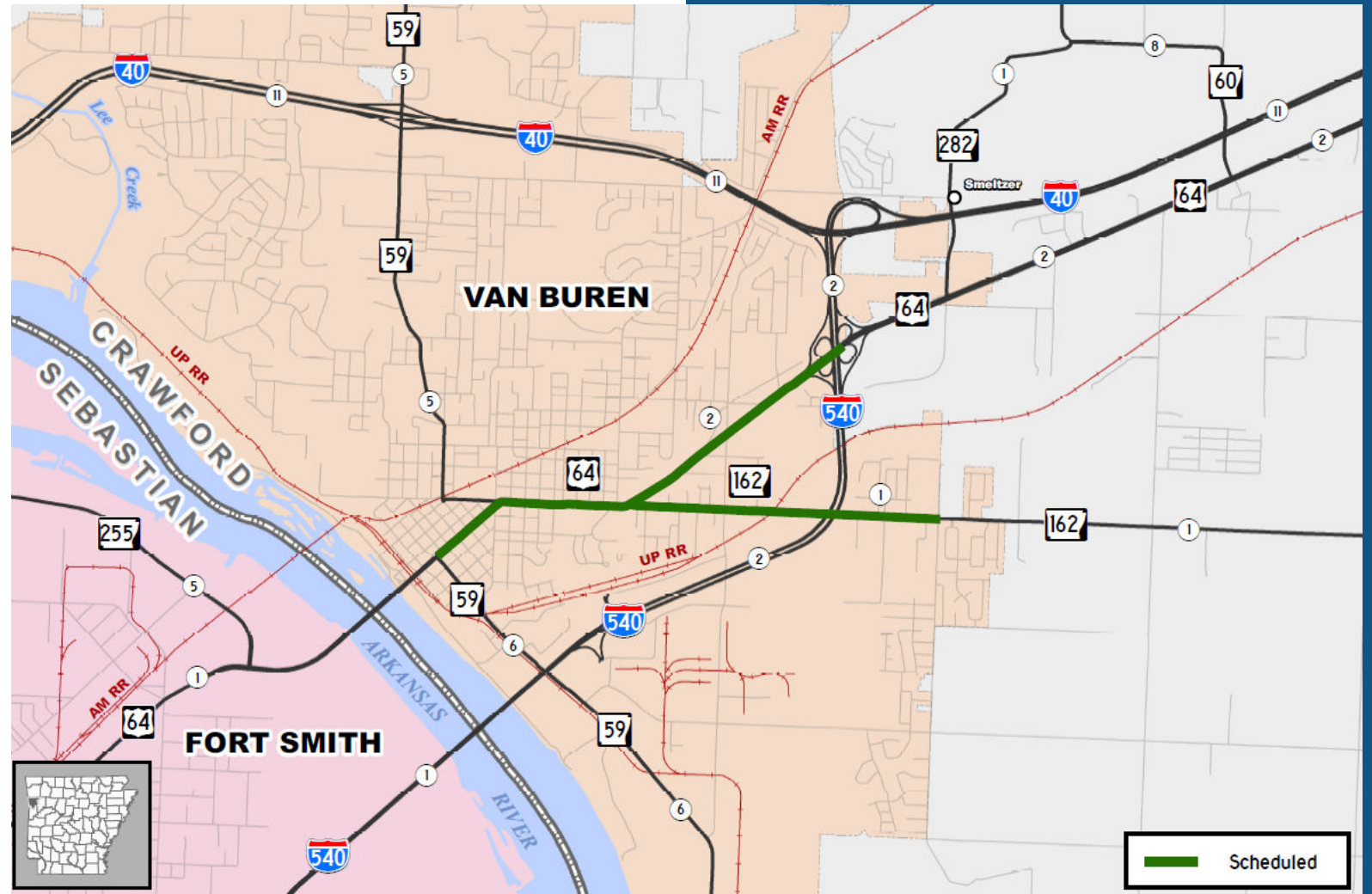
Interstate 540 **CRAWFORD & SEBASTIAN COUNTIES**

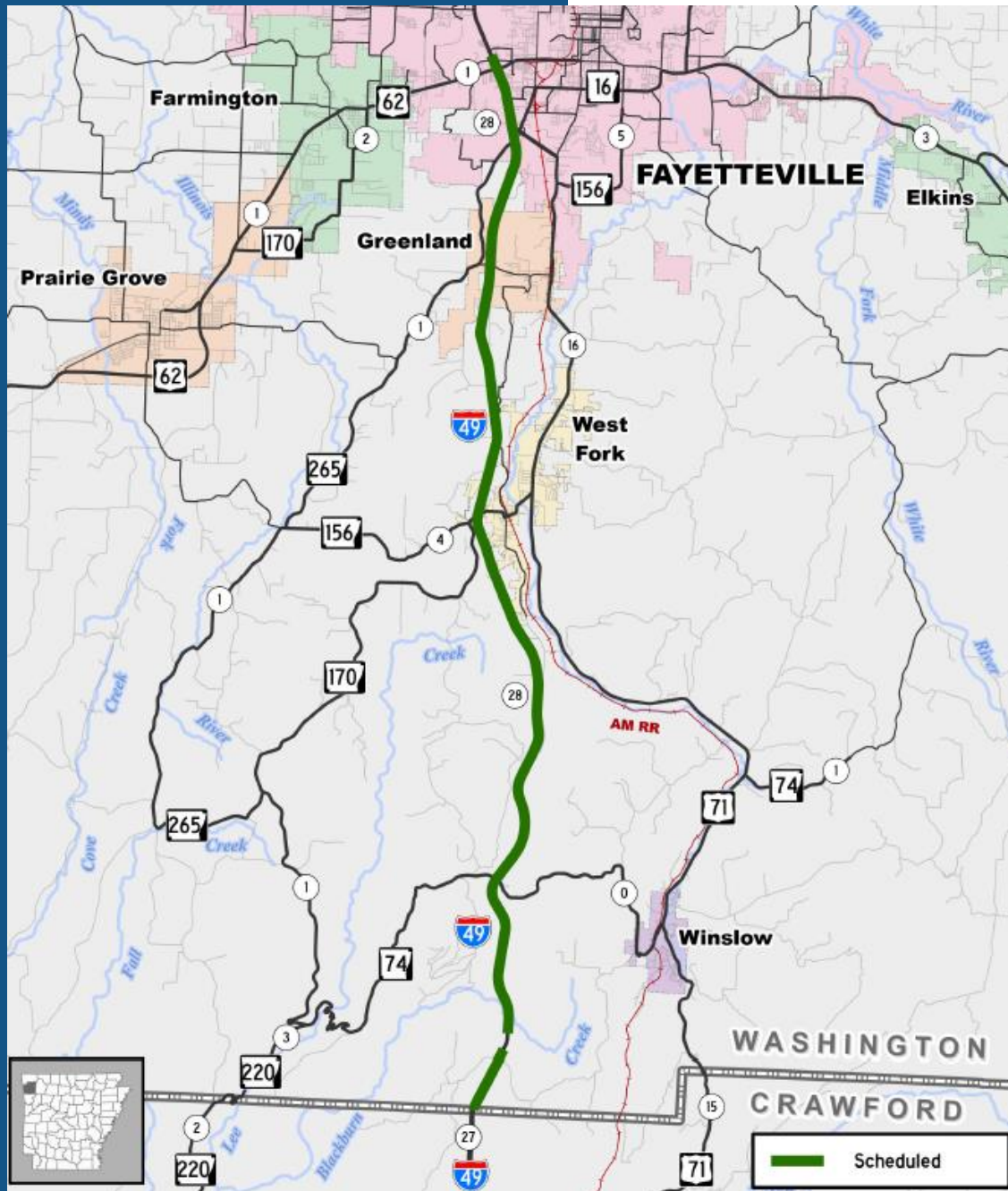
- Resurfacing & Joint Repair
- 7 Miles
- Est. \$10-20 Million
- Scheduled for Early 2024

HIGHWAYS 64 & 162

CRAWFORD COUNTY

- Resurfacing
- 4 Miles
- Est. \$2-3 Million
- Scheduled for 2025





Crawford Co. Line – Hwy. 62 **WASHINGTON COUNTY**

- Resurfacing
- 20 Miles
- Awarded to Emery Sapp & Sons for \$37.3 Million in November 1st Letting



Interstate 49 Updates

STATUS OF IMPROVEMENTS

INTERSTATE 49





INTERSTATE 49

ALMA TO TEXARKANA





THE NEXT PHASE

HIGHWAY 22 – INTERSTATE 40

- Environmental Impact Statement
Record of Decision
December 1997
- Alternative Delivery and Toll Feasibility
Study Completed
November 2018
- Environmental Re-Evaluation and
Preliminary Design
Began Fall 2020
- Issue #1 Approved by Voters
November 2020





FUNDING

- \$10 Million – Project Development
- \$800 Million Plus – ROW and Construction
- Funding Sources:
 - ✓ Amendment 101
 - ✓ Federal Funds / State Funds
 - ✓ IIJA Grants
 - ✓ Community Project Funding





ENVIRONMENTAL

- **Regulatory Permitting**

- Springhill Park (Section 4(f))
- McClellan-Kerr Arkansas River Navigation System
- Crawford County Levee District (Section 408)
- Flowage Easements (Section 408)
- Waters of the US, including Wetlands (Section 404)

- **Archeological Survey**

- 3+ months of field survey
- Approximately 600 acres assessed in field

- **Agency Coordination**

- US Army Corps of Engineers
- US Coast Guard
- US Fish and Wildlife Service
- Federal Highway Administration
- Federal Emergency Management Administration
- Arkansas Army National Guard



NEPA Re-evaluation

U.S. 71 Relocation
DeQueen to I-40
Crawford and Sebastian
Counties, Arkansas
November 2023
Job 001747



U.S. 71 Relocation DeQueen to I-40

NEPA Re-evaluation

APPROVAL OF THE RE-EVALUATION

Approving Official: Randal Looney Date: November 2, 2023

Randal Looney
Environmental Coordinator
Federal Highway Administration

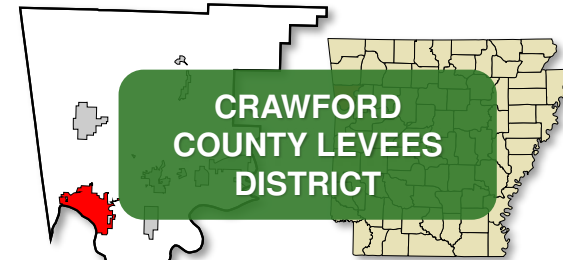
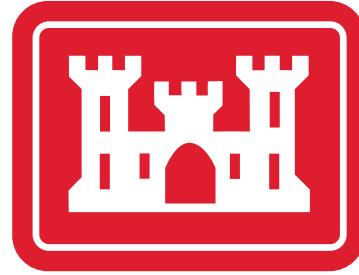


RIGHT OF WAY

- 600 Acres Right-of-Way
- 100 Parcel Acquisitions



COLLABORATION, INNOVATION & SAVINGS



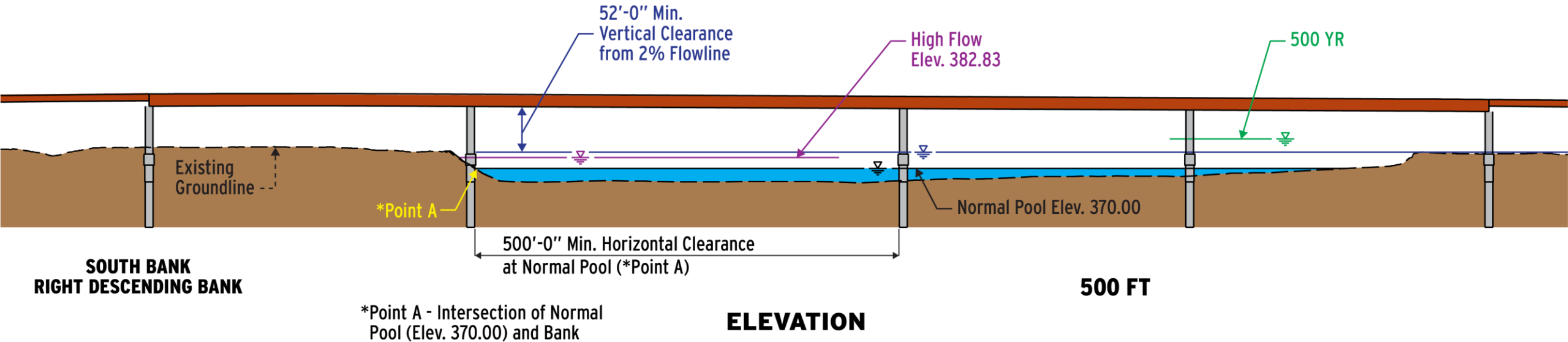


RIVER BRIDGE LOCATION



**James W. Trimble
Lock and Dam**
1.2 Miles Upstream

USCG REQUIREMENTS



USCG REQUIREMENTS



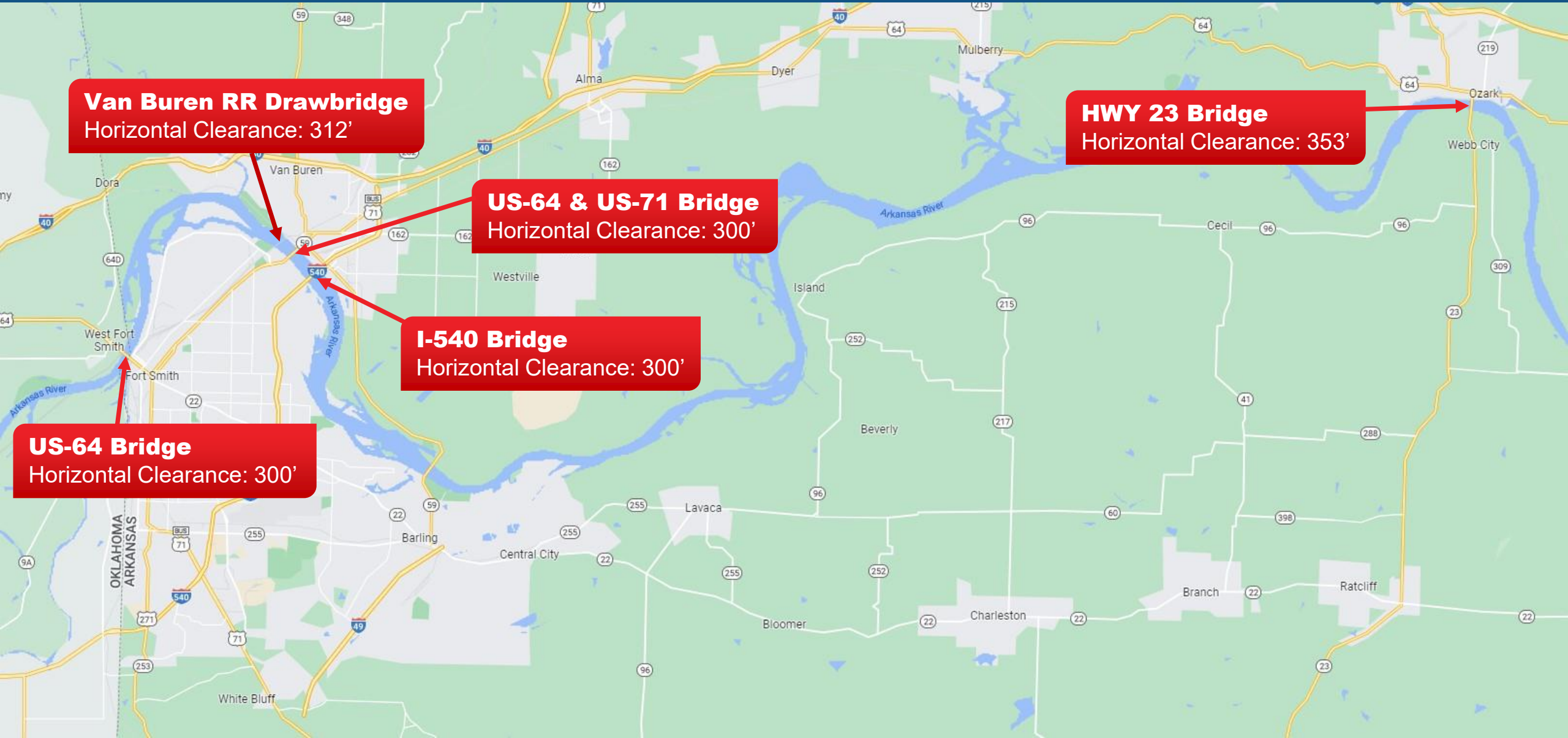
> 500 ft span



< 500 ft span

MKARNS RIVER BRIDGE

NAVIGATION CLEARANCE



WHAT'S DRIVING THE NAVIGATION CLEARANCE?

- Input from Tow Boat Operators
- Rapidly Rising Water Levels
- Bend in the River



Back to the Drawing Board

DESIGN TEAM RECOMMENDATION



- Engage the Seamen's Church Institute (SCI) to Conduct a River Navigation Study
- Test Different Span Lengths
- Provide for the Reasonable Needs of River Navigation



SCI STUDY

ASSEMBLING THE TEAM



Governing Agency



Study Administrator



Pilot



Pilot



Pilot



Pilot



Pilot

SCI STUDY SIMULATOR



SCI STUDY

THE RUN MATRIX

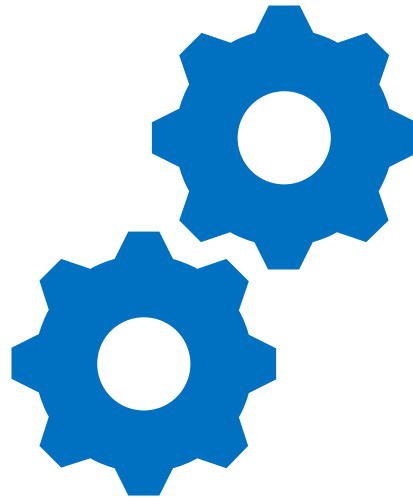


- Span Length
- River Flow
- Upstream/Downstream
- Wind Direction and Speed
- Daytime or Nighttime
- Loaded or Empty Barges
- Documented Each Run and Took Survey

SCI STUDY RESULTS



Safety

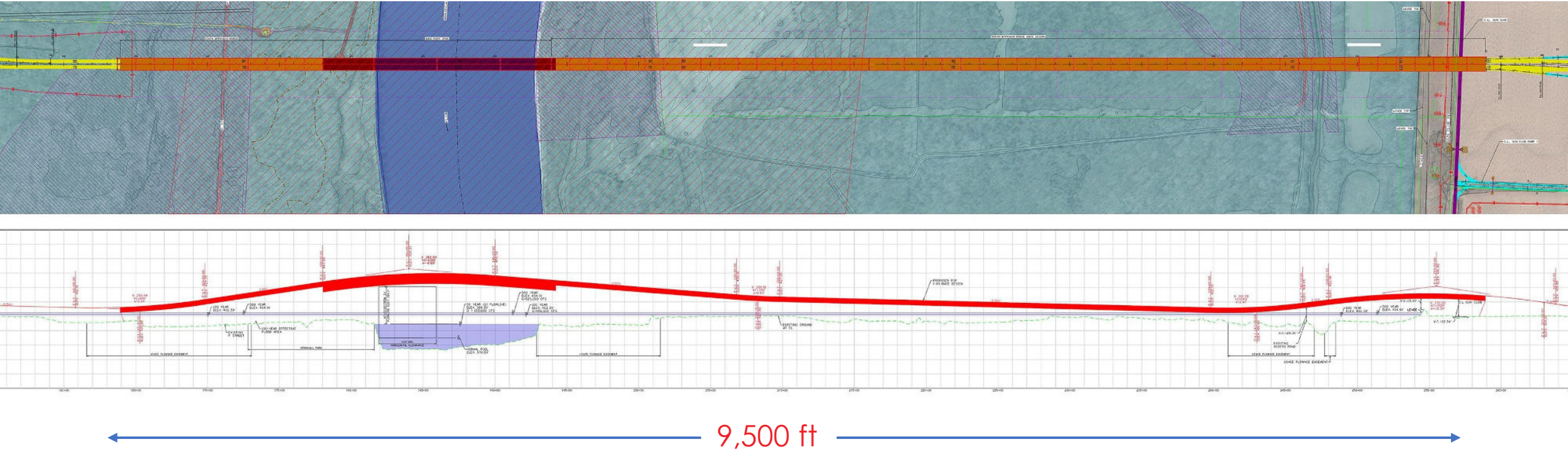


Function

\$30M

Est. Cost Reduction

Long Bridge (Original Concept)

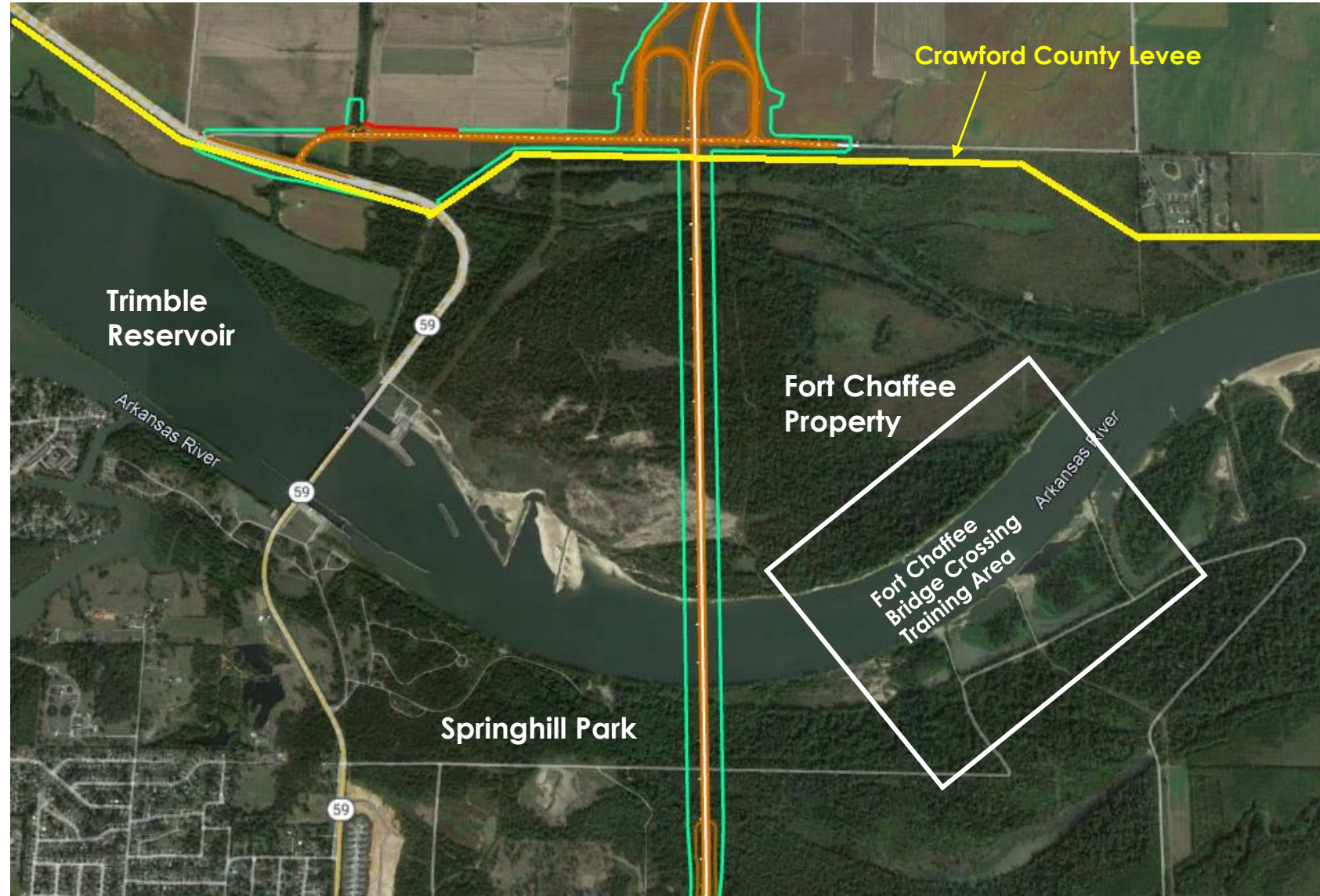


OPPORTUNITIES & CHALLENGES

Opportunity: Reduce the Length of the Bridge

Challenge: Impart no Negative Affect on the:

- Trimble Reservoir
- Crawford County Levee
- Springhill Park
- Fort Chaffee Property



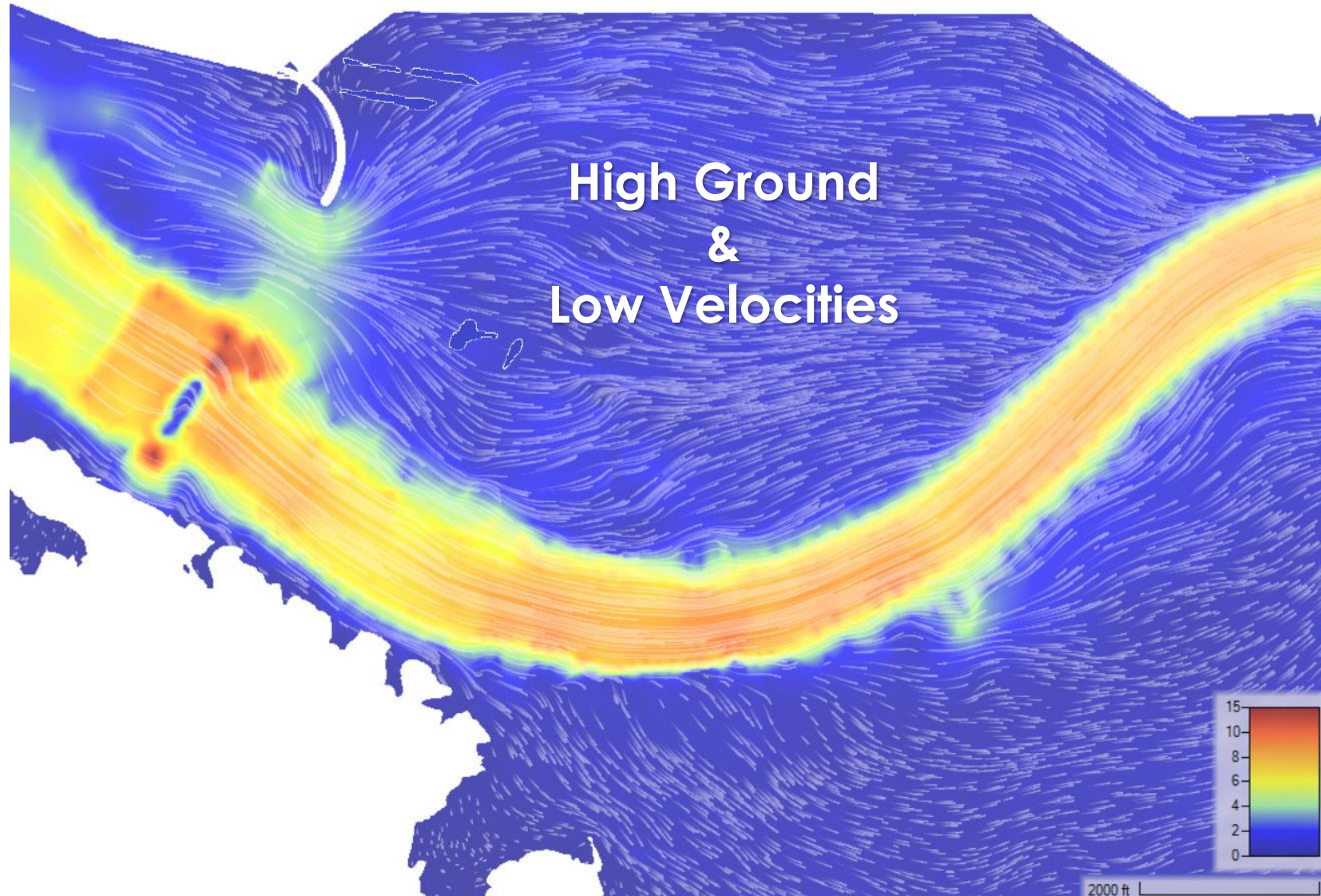
HYDRAULICS

EXISTING CONDITIONS

Existing Conditions

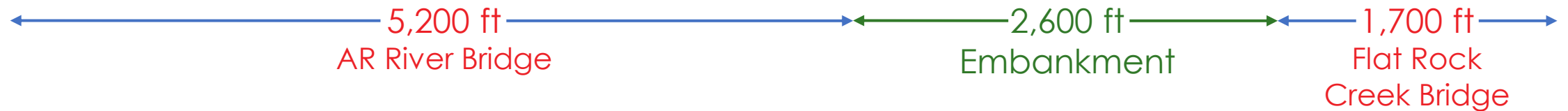
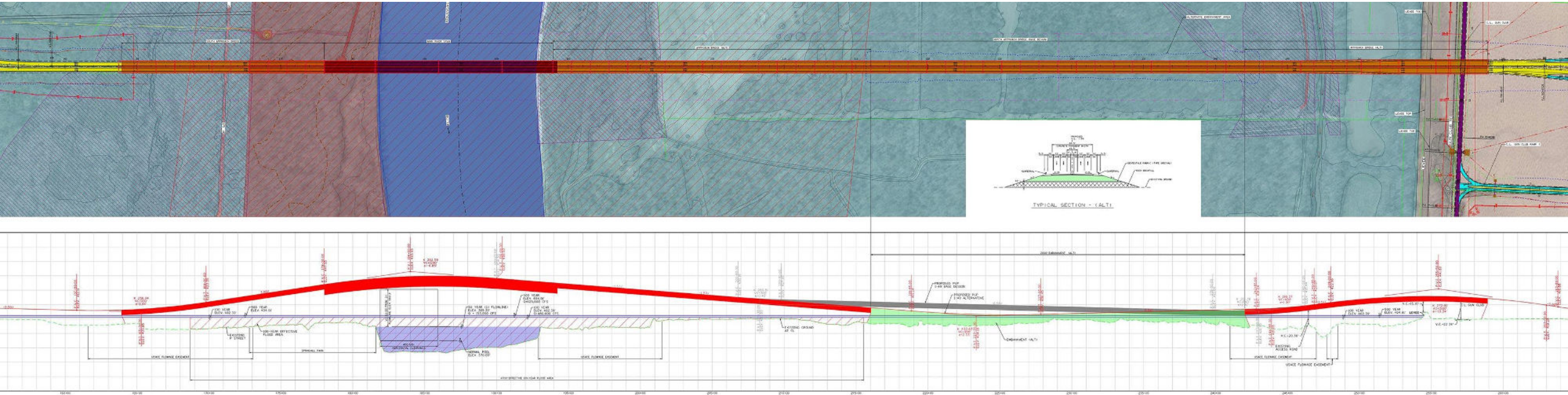
2D Hydraulic
Model

Showing Velocity
Vectors



REVISED CONCEPT

Short Bridges (Alternative)

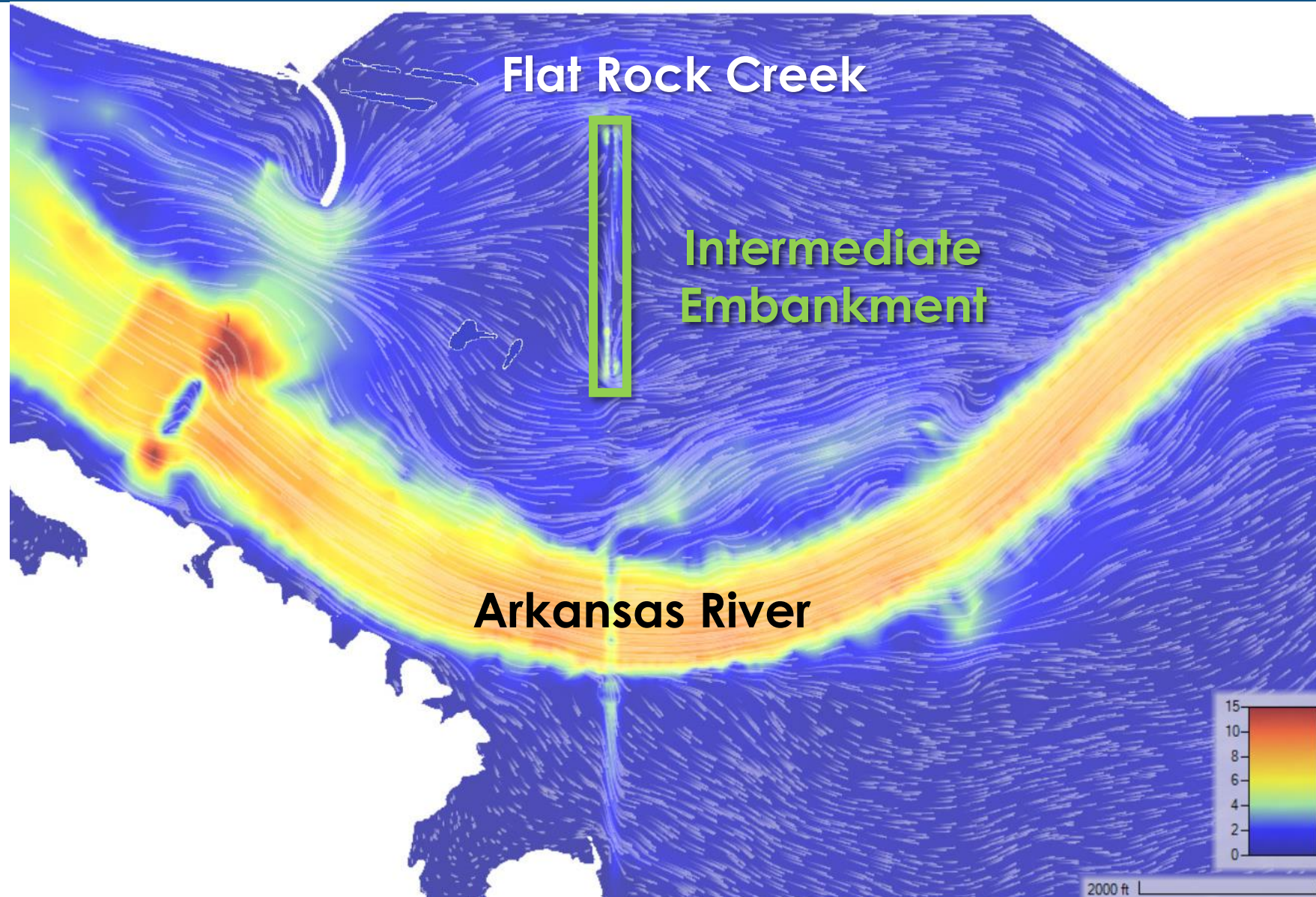


HYDRAULICS

PROPOSED CONDITIONS

**Proposed
Conditions**
2D Hydraulic
Model

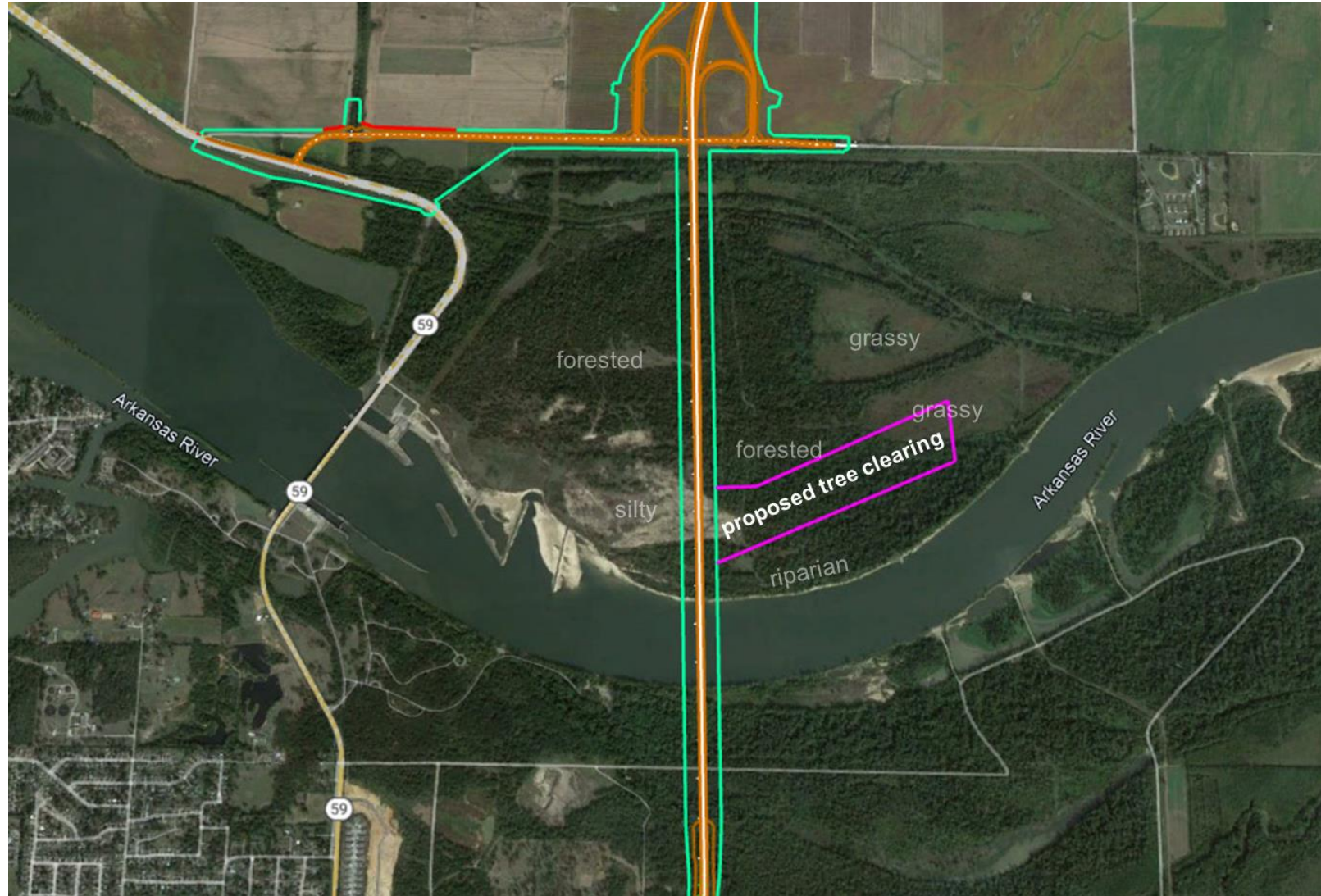
With Intermediate
Embankment
Instead of
Continuous Bridge



HYDRAULIC MITIGATION CONCEPT

Proposed Tree Clearing Area

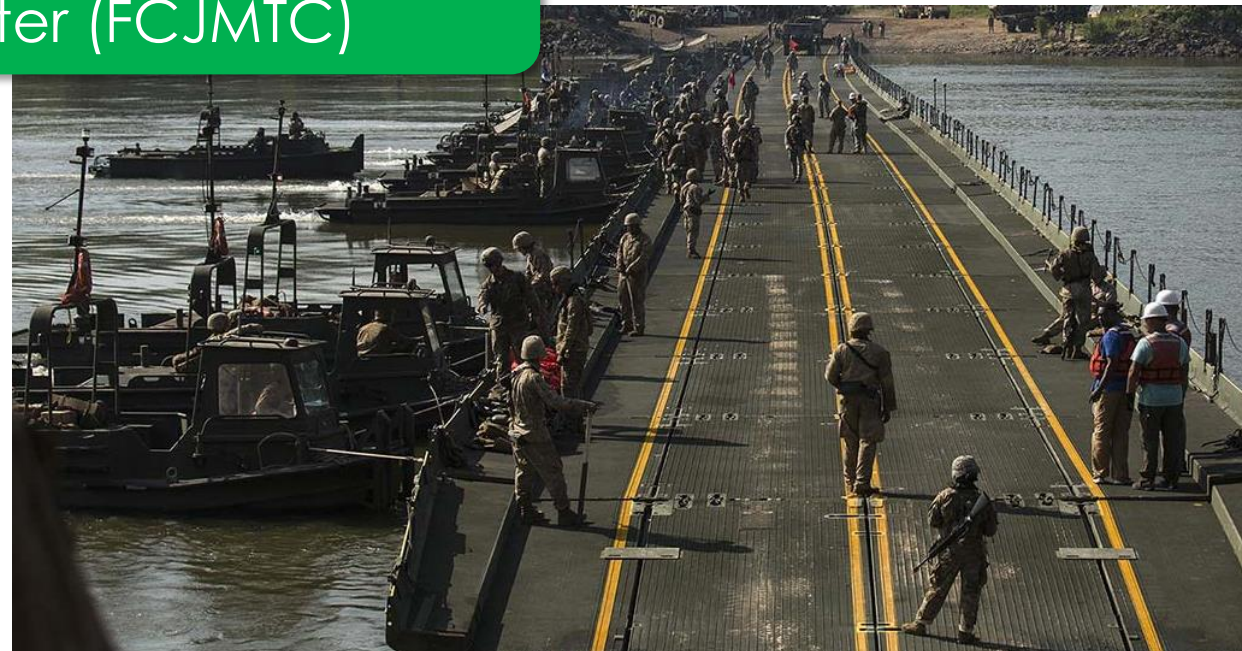
- Conceptual Extents
- 60 to 90 Acres
- Ft. Chaffee Concurrence



FORT CHAFFEE ACTIVITIES



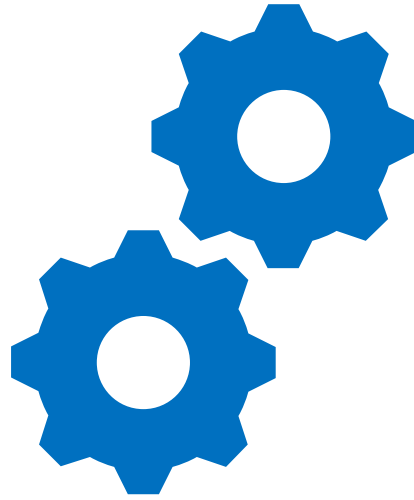
Fort Chaffee Joint Maneuver
Training Center (FCJMTC)



HYDRAULIC STUDY RESULTS



Safety



Function

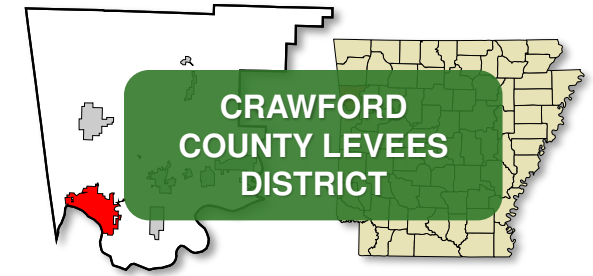
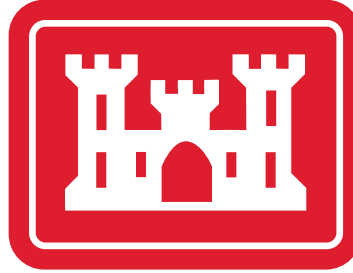
\$35M

Est. Cost Reduction
(Subject to USACE Section 408 Approval)



COLLABORATION, INNOVATION & SAVINGS

**\$65
Million
Estimated
Cost
Savings**





ECONOMIC POTENTIAL

Enable Forecasted Traffic Volumes of 20k Vehicles/Day Through the Heart of the Chaffee Crossing Redevelopment Area

Provide Direct Access to the Western Arkansas Intermodal Authority (WAIA) Economic Development Area

Provide Freight Access to the WAIA Future Intermodal Port Facility






Improve Access to the Designated Opportunity Zone

Extend the Primary Highway Freight System by Approximately 20 miles from I-40 to US 71





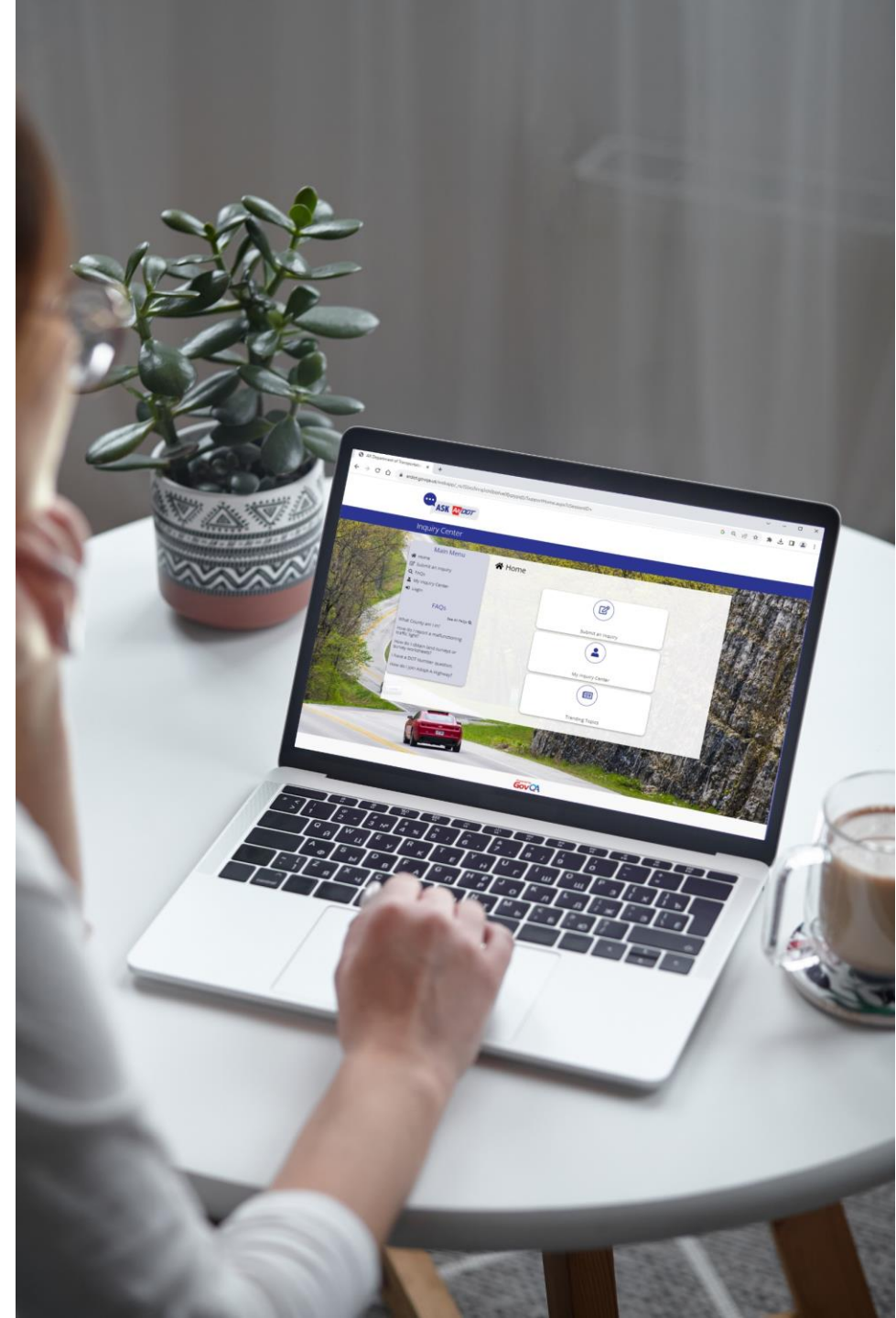
PRELIMINARY CONSTRUCTION PHASES

Segment	Major Work Scope Items
	Clearing and Grubbing (Highway 22 to East H Street)
	River Bridge and Approach Grading/Paving (Highway 22 to Gun Club Road)
	I-40/I-49 Interchange Bridges and Approach Grading/Paving
	Grading, Paving, Grade Separations and Cross Drainage Structures (Gun Club Road to Clear Creek Road)
	Grading, Paving, Grade Separations and Cross Drainage (Clear Creek Road to I-40/I-49 Interchange)



ASK **AR** **DOT**

Scan the QR Code to visit
our customer service portal!



Van Buren Area and Interstate 49 Updates

Jared Wiley, P.E.
Chief Engineer – Preconstruction

November 8, 2023

