

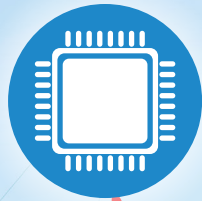
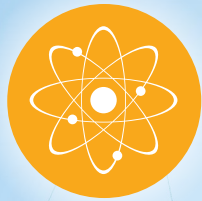


PRESENTS

Women **in** STEM CONFERENCE

April 12, 2024

Holiday Inn Little Rock-Airport Conference Center
3201 Bankhead Dr | Little Rock



WELCOME

You Are Meant To Be
The Answer!

FRIDAY, APRIL 12 AGENDA OVERVIEW

8:15 AM	Registration Begins
9:00 AM - 9:15 AM	ARDOT Welcome - Director Lorie H. Tudor, P.E., <i>Arkansas Department of Transportation (ARDOT)</i>
9:15 AM - 9:45 AM	Speaker - Dr. Tina Moore, <i>Arkansas Department of Higher Education</i>
9:45 AM - 9:55 AM	Break <i>Please visit the exhibitors</i>
10:00 AM - 10:45 AM	Breakout Session: <i>Session 1 (Room: Lindberg AB)</i> Dr. Sandra Leiterman <i>UALR</i> <i>Session 2 (Room: Lindberg C)</i> Julia Phillips, P.E. <i>BGE, Inc.</i> <i>Session 3 (Room: Enterprise)</i> Jane Hurley <i>Central Arkansas Water</i>
11:00 AM - 11:15 AM	Competition
11:15 AM - 12:00 PM	LUNCH - Speaker: Kanesha Adams <i>Bearapy Bookshelf</i>
12:00 PM - 12:10 PM	Break <i>Please visit the exhibitors</i>
12:15 PM - 1:00 PM	Breakout Session: <i>Session 1 (Room: Lindberg AB)</i> Dr. Sandra Leiterman <i>UALR</i> <i>Session 2 (Room: Lindberg C)</i> Julia Phillips, P.E. <i>BGE, Inc.</i> <i>Session 3 (Room: Enterprise)</i> Jane Hurley <i>Central Arkansas Water</i>
1:00 PM - 1:10 PM	Break <i>Please visit the exhibitors</i>
1:15 PM - 2:00 PM	Panel: Kiana Waits <i>Breach Bits</i> Dr. Dina Jones <i>UAMS</i> Keli Wylie, P.E. <i>ARDOT</i> Staci Stagg <i>CISCO Systems</i> Natalie Rogers, P.E. <i>Halff Associates, Inc.</i> Moderator – Ellen Coulter <i>ARDOT</i>
2:00 PM	Closing Remarks - Patrick Thomas <i>ARDOT</i>

SPEAKERS, PANELISTS & MODERATORS



LORIE H. TUDOR, P.E.
DIRECTOR, ARKANSAS
DEPARTMENT OF
TRANSPORTATION

Lorie Tudor was selected by the Arkansas Highway Commission to become Director of the Arkansas Department of Transportation (ARDOT) effective March 20, 2020.

She is a career ARDOT employee and just celebrated her 40-year service anniversary. She is a Professional Engineer. Tudor is currently serving as the President of the Southern Association of State Highway and Transportation Officials (SASHTO). She was appointed to the State Board for Licensure for Professional Engineers and Professional Surveyors in October 2020 and served as the Board's President in State Fiscal Year 2023.



KANESHA ADAMS
FOUNDER & CEO,
BEARAPY BOOKSHELF

Kanesha Adams is a Ph.D. student in the Educational Leadership Department at the University of Alabama. She is an educator, advocate, and "change agent." She currently

serves as the CEO and Founder of Bearapy Bookshelf, an edtech company she created to teach students the importance of storytelling and creativity. Bearapy is an acronym for Books, Bears, and Therapy. Through this work, in 2022 her team published over 15 children's books promoting the importance of social resilience including the recent publishing of Vanessa Simmons and 2022 Miss Arkansas, Ebony Mitchell, stuffed over 2,000 bears, traveled over 10,000 miles, and provided access to virtual self-care resources to over 2,000 children. In addition to this work, she is a family engagement specialist supporting schools and organizations as they infuse stories and technology into family-focused experiences.

Kanesha received her undergraduate degree from the University of Arkansas at Little Rock, an MS in Educational Psychology from Oklahoma State University, and an M.ED. in Educational Leadership from the University of Arkansas.

Kanesha currently lives in Arkansas with her husband, Nicholas Adams who is also an educator. She spends most of her time with her God-Given Best Friend, 5-year-old Kelahni.



DR. TINA MOORE
DIRECTOR OF WORKFORCE
DEVELOPMENT, ARKANSAS
DEPARTMENT OF HIGHER
EDUCATION

As the Arkansas Department of Education (ADE) Division of Higher Education (ADHE) Director of

Workforce Development, Dr. Tina Moore serves as a liaison for K-12, higher education, and workforce stakeholders. She fosters intra-department collaboration among ADE divisions to ensure each student has the learning opportunities needed to attain their post-secondary educational and career goals, including industry-recognized certifications and concurrent enrollment for college credit and credentials. Dr. Moore leads collaborative interagency partnerships among government offices to solidify comprehensive, data-driven, K-Workforce pathways. She coordinates engagement within and among institutions of higher education and workforce development partners related to programs of study that lead to high-growth, high-demand, and high-skill careers. Dr. Moore works with Arkansas business, industry, and philanthropy to increase work-based learning opportunities for high school and post-secondary students including pre-apprenticeships, apprenticeships, internships, and mentorships.

Dr. Moore received a bachelor of science degree from the University of Arkansas at Fayetteville and a master's degree in education from the University of Arkansas at Little Rock, both in secondary mathematics education. She completed a specialist degree through Arkansas State University and a doctoral degree through Liberty University in educational leadership, curriculum, and instruction. She holds educator licensure in secondary Mathematics, Computer Science, and district-level Curriculum/Program Administration. Her passion for STEM and lifelong learning has led to a diverse career path in education, healthcare, and the corporate sector. Dr. Moore has held various leadership positions including serving as the ADE Director of STEM/Computer Science Continuum; the ADE Mathematics Program Manager; the Arkansas State University at Beebe Dean of Business, Math, and Science; and the University of Arkansas for Medical Sciences Center for Health Literacy Director.



DR. SANDRA LEITERMAN
MANAGING DIRECTOR,
UNIVERSITY OF ARKANSAS LITTLE ROCK

Sandra currently serves as the managing director of the UA Little Rock Cyber Arena, overseeing cybersecurity education programs and outreach initiatives. With over ten years of experience in STEM education, she coordinates K-12 and corporate cybersecurity training, recruitment for the Cyber Security degree program, and awareness campaigns on online safety and security. Previously, Sandra taught middle school math, science, and engineering, as well as university-level education courses. She worked as a Math Specialist for Arkansas, providing professional development for math teachers across the state. Passionate about expanding opportunities for underrepresented groups in technical fields, Sandra focuses especially on mentoring girls and women in STEM.

Sandra holds a BS in Middle School Math & Science Education, a graduate certificate in K-12 Gifted Education, and an MSE in Digital Teaching and Online Learning. She earned a Ph.D. in Math Education from the University of Wisconsin-Milwaukee and is currently completing a graduate certificate through the National Cybersecurity Teaching Academy.



JULIA PHILLIPS, P.E.
DIRECTOR OF TRANSPORTATION
SYSTEMS, BGE, INC.

Julia grew up in a suburb of Chicago, Illinois. After high school, she moved to Arkansas where she received her BS & MS in Civil Engineering from the University of Arkansas. In 2004, she began her career in Northwest Arkansas providing design engineering and permit compliance reviews on national development programs. Over the next 10 years she added geotechnical engineering, materials testing, and inspection to her skill set.

In 2014, Julia moved to McKinney, Texas, to learn transportation engineering. Through assignments in highway and bridge design, airport infrastructure maintenance, and utility relocation coordination, she became a holistic project manager on highway and aviation projects. Julia also served as the Mayor Pro Tempore of Lowry Crossing, Texas. With what she learned in that role and her engineering background, Julia assisted county government in drafting their land use regulations and engineering standards. Julia moved back to Arkansas in 2020 to be closer to family and is now the Director of Transportation Systems in the Fayetteville office of BGE, Inc. She coaches the individual development of the Transportation Design Team members while being responsible for overall team growth strategy. She also facilitates multi-regional collaboration for public & private project delivery within BGE. Julia is a registered Professional Engineer in five states and a Certified Floodplain Manager.



DR. DINA JONES
ASSISTANT PROFESSOR, UAMS

Dina M. Jones, PhD, MPH is an Assistant Professor in the Department of Health Behavior and Health Education and Center for the Study of Tobacco in the Fay W. Boozman College of Public Health at the University of Arkansas for Medical Sciences. Dr. Jones has more than 10 years of experience conducting health disparities research and her current research investigates the role of tobacco product characteristics (i.e., flavors) and social-environmental and psychosocial factors as contributors to tobacco-related disparities among socially-disadvantaged and vulnerable groups. Dr. Jones aims to use her research to inform tobacco regulations and technology-supported observational studies and interventions to increase successful smoking cessation among populations disproportionately burdened by tobacco such as Black/African American and socioeconomically disadvantaged populations. Her research also extends to other contributors to health disparities including poor mental health, discrimination, and non-tobacco substance use.



JANE HURLEY
EDUCATION & OUTREACH SPECIALIST,
CENTRAL ARKANSAS WATER

Jane Hurley is the Education and Outreach Specialist for Central Arkansas Water (CAW). She has a Bachelor of Science in Chemistry from Delta State University in Cleveland, MS and uses her background in chemistry and biology to help people understand and appreciate the value of water to economic health, community health and our personal health.

Jane has worked in environmental analytical laboratories, a medical research lab at UT-Memphis and was lab supervisor at Batesville Water Utilities.

Prior to coming to CAW, she was the Quality Assurance Officer for the Arkansas Division of Environmental Quality where she oversaw the laboratory certification program and served as a liaison between the Department and the environmental laboratory community.

Jane is active in multiple professional organizations. She is Past President of Arkansas Water Environment Association and is the current Chair of the Arkansas Water Works and Water Environment Association. She received Arkansas Environmental Education Association's "Outstanding Non-Formal Educator" award in 2022. She is a graduate of the Little Rock Chamber of Commerce Leadership Greater Little Rock program, Class XXXV. She holds Class IV Water Treatment and Class IV Wastewater treatment licenses.

(...continued on pg 6)

SPEAKERS, PANELISTS & MODERATORS



KELI WYLIE, P.E.

ASSISTANT CHIEF ENGINEER -
PROGRAM DELIVERY,
ARKANSAS DEPARTMENT OF
TRANSPORTATION

Keli Wylie graduated from Louisiana Tech University with a Bachelor of Science in Civil Engineering.

Upon graduation in 2002, Wylie began her civil engineering career in ARDOT's Roadway Design Division. She held various positions within the Division and, in 2011, began administering the \$1 billion 2011 Interstate Rehabilitation Program. One year later, in December 2012, she began administering the 10-year Connecting Arkansas Program (CAP), which included 31 projects totaling \$2 billion spanning 200 miles of highways and interstates in Arkansas.

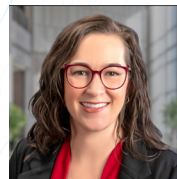
In December 2019, Wylie was appointed to serve as ARDOT's Alternative Project Delivery Administrator. The Department's Alternative Delivery Program oversees \$900 million worth of construction projects including the State's first Design Build, Progressive Design Build, and Construction Manager-General Contractor projects; as well as Independent Cost Estimating services.

In April 2023, she was promoted to her current position as Assistant Chief Engineer for Program Delivery.

Outside of work, Wylie enjoys being involved in the community. She is the Immediate Past President of Women's Transportation Seminar (WTS) Arkansas, a networking organization for women in the transportation industry. She was the founding chapter president of WTS Arkansas and has been instrumental in establishing a scholarship for young women pursuing transportation-related fields of study.

In 2022, Wylie graduated from the Arkansas State Chamber of Commerce's Leadership Arkansas Class XVI. That same year, she was chosen to participate in the Honorary Commander program for the 19th Airlift Wing at the Little Rock Air Force Base (LRAFB), and she was named a Museum of Discovery Spark! Star honoring women in STEM careers.

In 2023, Wylie was named to the Women's Foundation of Arkansas (WFA) Top 100 Women of Impact list. In January 2024, she was appointed to the Museum of Discovery's Board of Directors. Wylie is a Registered Professional Engineer.



NATALIE ROGERS, P.E.

WATER RESOURCES ENGINEER,
HALFF ASSOCIATES, INC.

Natalie is a dedicated water resources engineer with extensive experience working with private firms and government agencies. She joined Halff Associates, Inc. in October of 2021, following employment with the US Army Corps of Engineers and as a Water Resources Engineer for an environmental consultant based in Little Rock. She has been involved in a wide range of water resources and management projects throughout her career, making her a versatile asset to Halff and their clients.

Natalie's expertise lies in hydrologic and hydraulic modeling, floodplain mapping, dam breach analysis, and project management. Her proficiency in FEMA floodplain mapping is particularly noteworthy, as she has successfully undertaken Base Level Engineering, Flood Risk Assessments, and Detailed Analysis projects. She is well-versed in developing geospatial products in accordance with FEMA standards, technical references, and guidance documents, ensuring the highest level of accuracy and compliance in her work.

Natalie's dedication to safety is evident in her Dam Safety experience, where she conducted dam breach analyses for various dams across Arkansas, crafted Emergency Action Plans, and facilitated EAP Table Top Exercises to ensure preparedness and response efficiency. Her competence in FEMA guidelines and floodplain mapping allows her to manage project tasks effectively, seamlessly coordinating quality control efforts among her team members.

Her accomplishments are not limited to her technical skills alone. In September 2022, Natalie was elected as the Chair of the Arkansas Floodplain Management Association, demonstrating her leadership abilities and commitment to advancing floodplain management practices in the state. Her passion for her work is evident through her involvement in No-Rise Analysis and various hydrologic and hydraulic projects, further showcasing her dedication to creating a positive impact in the field of water resources engineering.

As the current chair of the Arkansas Floodplain Management Association and now promoted to Water Resources Team Lead at Halff, Natalie continues to inspire and lead, ensuring that her wealth of experience and knowledge benefits her colleagues and the communities she serves. Her unwavering commitment to water resources and floodplain management is a testament to her passion for environmental stewardship and making a difference in the world.



ELLEN COULTER

MEDIA COMMUNICATIONS MANAGER,
ARKANSAS DEPARTMENT OF
TRANSPORTATION

Ellen Coulter joined ARDOT in 2021 as the Media Communications Manager. Her professional background includes experience in broadcast news, print journalism, nonprofit communications, and government communications. Ellen was born and raised in St. Louis, Missouri. She earned Bachelor's degrees in Journalism and Spanish from the University of Arkansas - Fayetteville in 2015. In 2022, she graduated from the University of Arkansas - Little Rock with a Master's degree in Public Administration. Ellen lives in Little Rock with her husband, son, and their two Great Pyrenees.



STACI STAGG

STRATEGIC ACCOUNT MANAGER,
CISCO SYSTEMS

As a US Public Sector Strategic Account Manager at Cisco Systems, Staci drives technology innovation in networking, cybersecurity, IoT, AI and voice and video collaboration to help state and local government agencies, K12s, and higher education organizations in Arkansas achieve their fullest potential in the digital age. With over 25 years experience in sales-related IT, Staci leverages her business expertise across multiple IT disciplines to solve problems and deliver comprehensive IT solutions that make home stronger for all Arkansans. Staci was recognized as a CRN Women of the Channel Honoree for her excellence and vision in IT sales strategy. Prior to Cisco, Staci led both national and global sales organizations in previous roles including, National Director of Enterprise Cloud Channel, Worldwide Director of Sales Enablement, and Director of Channels and Field Marketing for the U.S. Central Region, where she managed teams and grew reseller and distribution channels; created sales enablement content and tools; and executed corporate marketing strategy. Staci is passionate about building and maintaining strong relationships, driving customer satisfaction, and creating positive social impact through technology. A proud University of Texas Longhorn, Staci has a B.S. in Business with a specialization in Marketing and holds multiple sales-related technology certifications. With nearly three decades as a volunteer and board member for both national and local nonprofits, Staci has shifted her volunteer focus to animal rescue after rescuing two of her three dogs from a local animal shelter. She regularly fosters homeless dogs and provides transport, rehoming services and obedience training for several rescue efforts. Staci and her Goldendoodle, Mr. Porter, are a pet-facilitated therapy team and together, they visit elder care and rehab facilities each week to provide comfort and encouragement through animal engagement. Staci lives in central Arkansas with her cat and dog pack and loves to fly fish, travel the world and can be found cheering loudly during college football season.



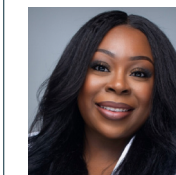
CARMEN ROSE

CHIEF METEOROLOGIST, FOX16

Carmen Rose is the chief meteorologist for FOX16 in Little Rock, Arkansas. She's on the air weekday evenings at 5:30pm, 6:30pm & 9pm. Carmen was born and raised in Memphis, Tennessee. She graduated from Michigan State University with a B.S. in Earth Science and an atmospheric science/meteorology concentration. She also has her B.A. in Journalism. She was granted her CBM (Certified Broadcast Meteorologist) from the American Meteorological Society.

She loves science, breaking down weather phenomena and learning about our fluid atmosphere. Carmen's career began in Columbus, Georgia as a weekend meteorologist and environmental multimedia journalist. She then took a chief meteorologist position in Eugene, Oregon. She was on FOX16 Good Day from 7 A.M. to 9 A.M. week day mornings, along with covering weather on the 4 A.M. newscast and traffic from 5 A.M. to 7 A.M. on FOX16's sister station, KARK. She was promoted to chief meteorologist for FOX16 in March 2022.

In her free time, catch Carmen flying single-engine airplanes, water coloring or on the tennis court.



KIANA WAITS

MARKETING COORDINATOR,
BREACH BITS

Kiana is an experienced marketing professional with over 12 years of experience within the media and marketing industry. Kiana obtained her Bachelor of Arts in Mass Communication at Henderson State University in 2019 and went on to pursue a Masters of Liberal Arts degree in Media and Popular Culture. Her expertise includes public relations, radio/broadcast journalism, graphic design, branding, video production, and so much more. Kiana is currently the Marketing Coordinator for the cyber security company BreachBits.

As a native of a small town called Wynne, Arkansas, Kiana has grown to appreciate helping small to medium-sized businesses achieve groundbreaking success by staying connected to her roots. Coming from a family of entrepreneurs, Kiana set out to continue the cycle by applying her skills where it mattered the most.

Her passion and drive has allowed her to be one of the youngest and most successful marketing professionals within several organizations throughout her career, including Arkansas Medical, Dental, and Pharmaceutical Association (AMDPA), City Serve Arkansas, The Venture Center, and more. Kiana's drive and creativity help her to achieve the impossible while also wanting to make a positive impact on the world and the people within it.

EXHIBITORS

VISIT THEM IN THE ATRIUM & SOLARIUM

INDUSTRY EXHIBITORS

- Harbor Environmental Safety and Engineering
- Garver Engineers
- McClelland Consulting Engineers
- CEI Solutions
- Rogers Group, Inc.
- Jacobs Engineering
- Cromwell Architects Engineers
- Federal Highway Administration
- Dr. Lacandian Spencer Foundation
- Arkansas Tech University
- Central Arkansas Water
- Deloitte
- Windstream Communications
- McCormick Asphalt Paving and Excavating, Inc.
- Union Pacific Railroad
- BGE, Inc.
- Michael Baker International, Inc.
- Half Associates, Inc.
- Terracon

ARDOT EXHIBITORS

- Materials Division
- Construction Division
- Surveys Division
- Environmental Division
- Human Resources Division
- Information Technology Division
- ARDOT - GIS



Crafton Tull



ACKNOWLEDGEMENTS

SPECIAL THANKS TO THE FOLLOWING

LORIE H. TUDOR, P.E.

ARDOT Director

REX VINES, P.E.

ARDOT Chief Engineer - Operations

STEPHEN FRISBEE, P.E.

ARDOT Assistant Chief Engineer - Maintenance

CHAD ADAMS, P.E.

ARDOT Assistant Chief Engineer - Construction

JARED WILEY, P.E.

ARDOT Chief Engineer - Preconstruction

KELI WYLIE, P.E.

ARDOT Assistant Chief Engineer - Program Delivery

JESSIE JONES, P.E.

ARDOT Assistant Chief Engineer - Planning

KEVIN THORNTON, P.E.

ARDOT Chief - Administration

CRYSTAL WOODS

ARDOT Assistant Chief Administration

JOANNA P. MCFADDEN

ARDOT Civil Rights Officer

VIVIEN HOANG

FHWA Division Administrator - Arkansas Division

JOHN SPEARS, JR.

Management & Program Analyst/Civil Rights Specialist, FHWA Arkansas Division

ARDOT CONTRIBUTORS

THANK YOU, TOO!

WOMEN IN STEM CONFERENCE COMMITTEE MEMBERS

Joanna P. McFadden

Stephanie Martin

Patrick E. Thomas *Co-chair*

Sarah Tamayo

Rochelle Blue

Kristi Marshall *Co-chair*

Ellen Coulter

Josilyn Mitchell

Erika Simple

Jessica Sisk

Denise Powell

Marrissa Brickey

VOLUNTEERS

Ruthie Berryhill

Rusty Hubbard

Timothy McCourt

Cressandra Mahone

Isaac Hill

Deandra Atkins

Phaedra Cowan

Tasha Halbert

Leonard Smith

NOTES

FOR FUTURE REFERENCE

